

SA BAXTER  
ARCHITECTURAL HARDWARE





## Index

7	Door Knobs
55	Levers
97	Rosettes
121	Hinges
155	Hinge Finials
167	Pocket Door Pulls
177	Thumb Turns
193	Keyhole Escutcheons
201	Escutcheon Plates
221	Cylinder Covers
227	Door Stops
231	Cabinet Knobs
249	Cabinet Pulls
267	Door Pulls
281	Suites
315	Project-Ready Hardware
327	Flooring
331	Finish Palette



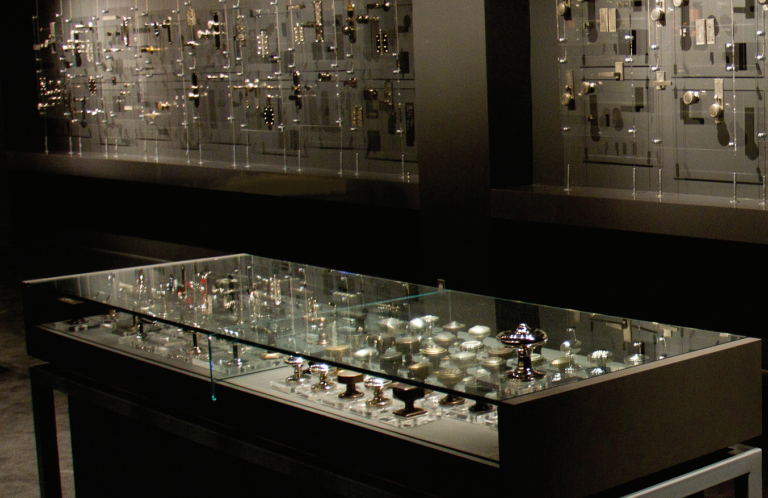


SA Baxter designs and manufactures bespoke architectural hardware for high-end residential and commercial projects. Our hardware is cast in brass, bronze and white bronze base metals and we offer one of the most comprehensive finish palettes in the industry.

Clients choose from our Bespoke and Project-Ready Collections, taking advantage of our extensive selection of patterns and finishes. For our Artisan Series, SA Baxter has collaborated with some of the industry's most renowned artisans, designers and architects. Our hardware suites range in style from traditional to contemporary and everything in between.

SA Baxter's architectural hardware is handmade to order in our eco-friendly foundry and atelier located in the New York Hudson Valley. The ancient process of lost wax casting and modern, green technology allows for limitless design capabilities.

SA Baxter offers a custom service for those clients wishing to modify an existing SA Baxter product or develop their own design. SA Baxter produces real-time designs, generates cost projections, 3-D models and builds exact prototype pieces.



## SHOWROOMS

Located in the New York Design Center in New York City and the Design Centre Chelsea Harbour in London, clients can view patterns, metals and finishes. Our experienced sales team guides clients through the design and selection process to create a tailored hardware package.

### NEW YORK

New York Design Center  
200 Lexington Avenue  
Suite 1205  
New York, NY 10016  
t: (800) 407-4295

### LONDON

Design Centre Chelsea Harbour  
314 Design Centre  
3rd Floor, Centre Dome  
London SW10 0XE England  
t: +44 (0) 20-8196-2410

E-mail SA Baxter: [hardware@sabaxter.com](mailto:hardware@sabaxter.com)





# DOOR KNOBS

# DK 1000



Available sizes: 2.25", 2.5", 2.75"  
Shown with Rosette RS 1001



Available sizes: 2.25", 2.5", 2.75"  
Shown with Rosette RS 1001

Also available as a 4" Centre Door Knob

DK 1020



Available sizes: 2.5", 2.75"  
Shown with Rosette RS 1001



DK 1037

DOOR KNOBS



Available sizes: 2.25", 2.5", 2.75"  
Shown with Rosette RS 1010

DK 2006



Available sizes: 2.5", 2.75"  
Shown with Rosette RS 1001



Available sizes: 2.25", 2.5", 2.75"  
Shown with Rosette RS 2009

DK 2012



Available sizes: 2.25", 2.5", 2.75"  
Shown with Rosette RS 1001



Available sizes: 2.25", 2.5", 2.75"  
Shown with Rosette RS 2017

DK 2028



Available sizes: 2.25", 2.5", 2.75"  
Shown with Rosette RS 2028



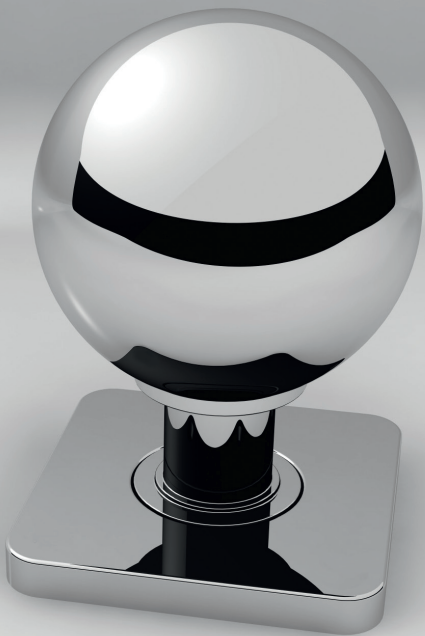
Available sizes: 2.5", 2.75"  
Shown with Rosette RS 1001

DK 2062



Available sizes: 2.25", 2.5", 2.75"  
Shown with Rosette RS 1001





Available sizes: 2.25", 2.5", 2.75"  
Shown with Rosette RS 2028

# DK 2100



Available size: 2.75"  
Shown with Rosette RS 2102

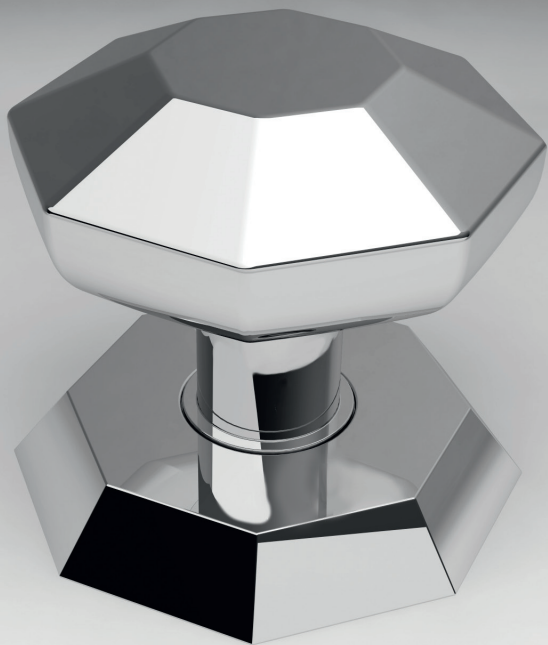
DK 2101

DOOR KNOBS



Available sizes: 2.5", 2.75"  
Shown with Rosette RS 2102

# DK 2103



Available sizes: 2.25", 2.5", 2.75"  
Shown with Rosette RS 2103

Also available as a 4" Centre Door Knob

DK 2107

DOOR KNOBS



Available size: 2.5"  
Shown with Rosette RS 3006

DK 3001



Available sizes: 2.25", 2.5", 2.75"  
Shown with Rosette RS 1001



Available sizes: 2.25", 2.5", 2.75"  
Shown with Rosette RS 2002

Also available as a 4" Centre Door Knob

DK 3007

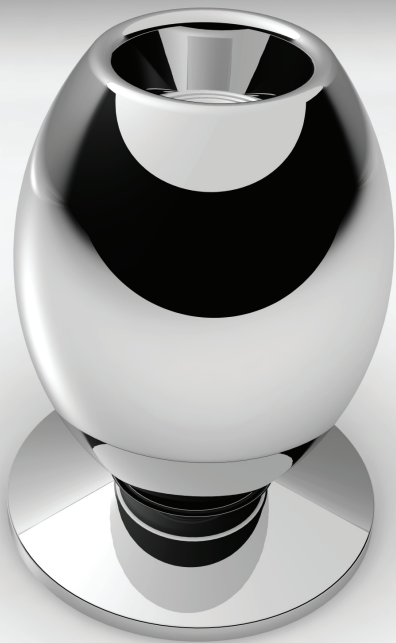


Available sizes: 2.25", 2.5", 2.75"  
Shown with Rosette RS 5007



DK 3010

DOOR KNOBS



Available sizes: 2.25", 2.5"  
Shown with Rosette RS 1010

DK 3013



Available sizes: 2.25", 2.5", 2.75"

Shown with Rosette RS 1001

DK 3014

DOOR KNOBS



Available sizes: 2.25", 2.5", 2.75"  
Shown with Rosette RS 1001

DK 3018



Available sizes: 2.25", 2.5", 2.75"  
Shown with Rosette RS 1001



Available sizes: 2.25", 2.5", 2.75"  
Shown with Rosette RS 1027

# DK 3101



Available sizes: 2.25", 2.5", 2.75"  
Shown with Rosette RS 3101

Also available as a 4" Centre Door Knob

DK 3102

DOOR KNOBS



Available sizes: 2.25", 2.5", 2.75"  
Shown with Rosette RS 3102

# DK 3103



Available sizes: 2.25", 2.5", 2.75"  
Shown with Rosette RS 3103



DK 3104

DOOR KNOBS



Available sizes: 2.25", 2.5", 2.75"  
Shown with Rosette RS 3104

# DK 3106



Available sizes: 2.25", 2.5", 2.75"

Shown with Rosette RS 3106

DK 3107

DOOR KNOBS



Available sizes: 2.25", 2.5", 2.75"  
Shown with Rosette RS 3107

DK 4004



Available sizes: 2.25", 2.5", 2.75"  
Shown with Rosette RS 5004

DK 4025

DOOR KNOBS



Available sizes: 2.25", 2.5", 2.75"  
Shown with Rosette RS 1001

DK 4034



Available sizes: 2.25", 2.5", 2.75"  
Shown with Rosette RS 1001



Artisan Series - Colin Gentle

Available sizes: 2.25", 2.5", 2.75"

Shown with Rosette RS 1001

DK 4055

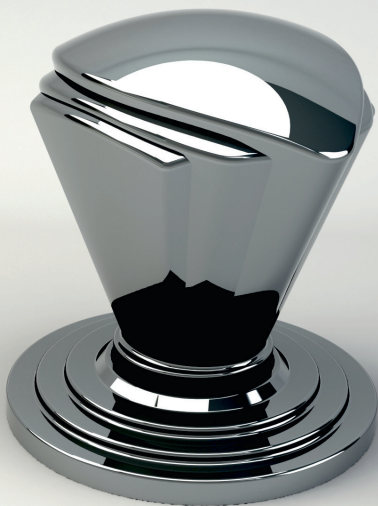


Available sizes: 2.5", 2.75"  
Shown with Rosette RS 2002



DK 4065

DOOR KNOBS



Available sizes: 2.5", 2.75"  
Shown with Rosette RS 2002

DK 5005



Available sizes: 2.25", 2.5", 2.75"  
Shown with Rosette RS 1001

DK 5026

DOOR KNOBS



Available sizes: 2.25", 2.5", 2.75"  
Shown with Rosette RS 2002

Also available as a 4" Centre Door Knob

DK 5801



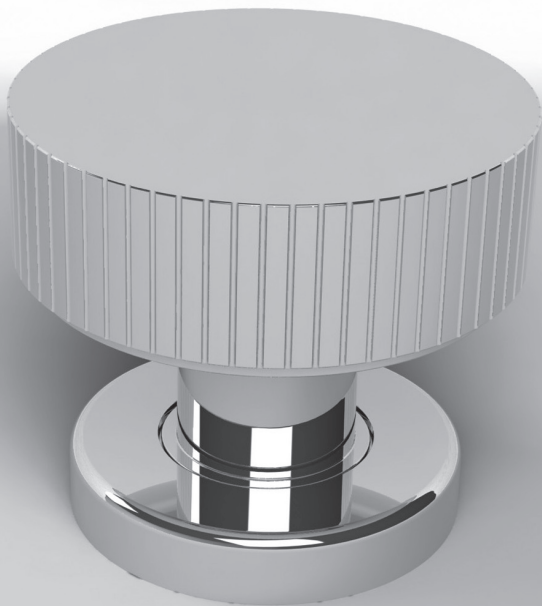
Artisan Series - Robert A. M. Stern

Available size: 2.5"

Shown with Rosette RS 1001

DK 5820

DOOR KNOBS

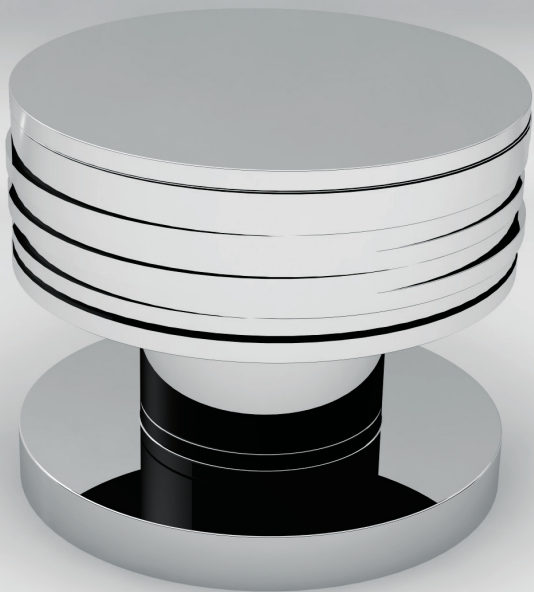


Artisan Series - Robert A. M. Stern

Available size: 2.5"

Shown with Rosette RS 5820

# DK 5900



Artisan Series - Harry Allen

Available sizes: 2.25", 2.5", 2.75"

Shown with Rosette RS 5900

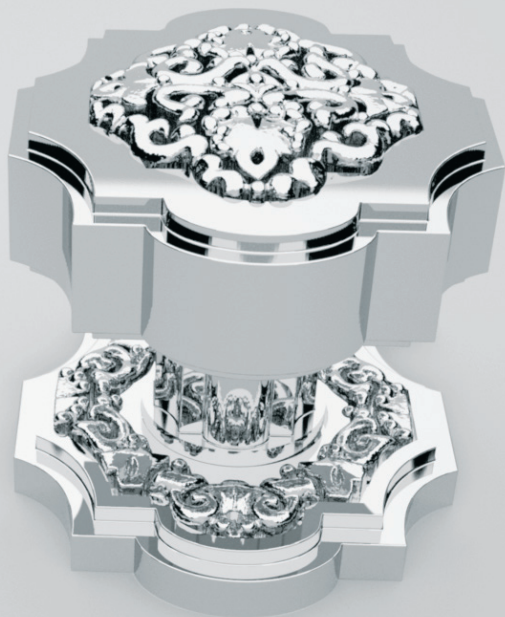


Artisan Series - Paul Bundarin

Available size: 3"

Shown with Rosette RS 5901

DK 5902



Artisan Series -Judith Frey

Available size: 2.75"

Shown with Rosette RS 5902





Artisan Series - Thomas Kurilla

Available size: 2.5"

Shown with Rosette RS 5903

Also available as a 4" Centre Door Knob

DK 5904



Artisan Series - Paul Robilotti

Available size: 2.75"

Shown with Rosette RS 5904

DK 5912

DOOR KNOBS



Artisan Series -Judith Frey

Available size: 2.5"

Shown with Rosette RS 1001



# LEVERS

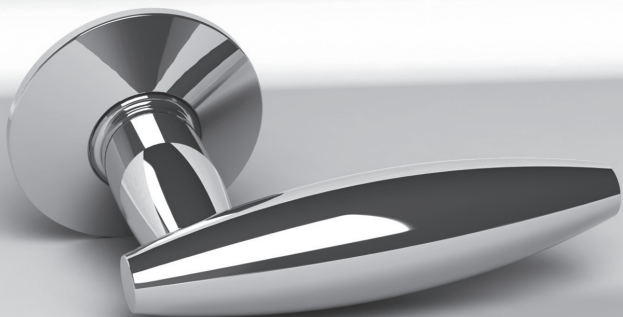
# LV 1001



Length: 4.5"

Projection: 2.5"

Shown with Rosette RS 1001

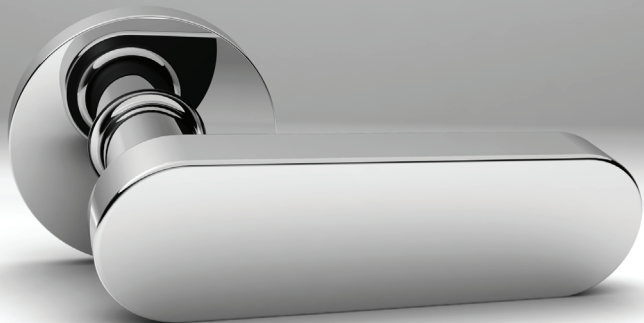


Length: 4.5"

Projection: 2.8"

Shown with Rosette RS 1010

# LV 2027



Length: 4.75"

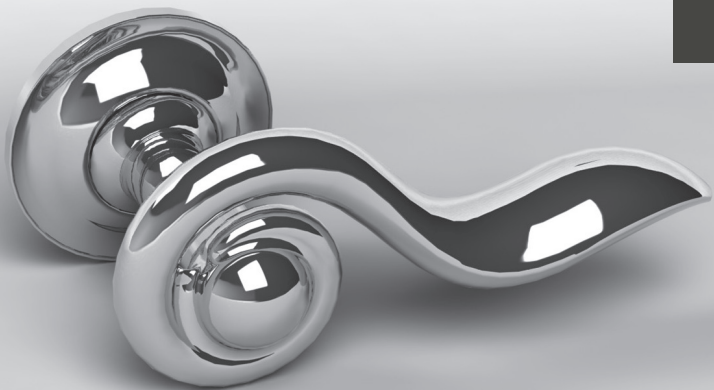
Projection: 2.5"

Shown with Rosette RS 1027



LV 2038

LEVERS



Length: 4.4"

Projection: 2.5"

Shown with Rosette RS 1001

# LV 2041



Length: 4"

Projection: 3.29"

Shown with Rosette RS 1001



Artisan Series - Colin Gentle

Length: 4.6"

Projection: 2.9"

Shown with Rosette RS 1001

# LV 2060



Length: 4"

Projection: 2.75"

Shown with Rosette RS 1001

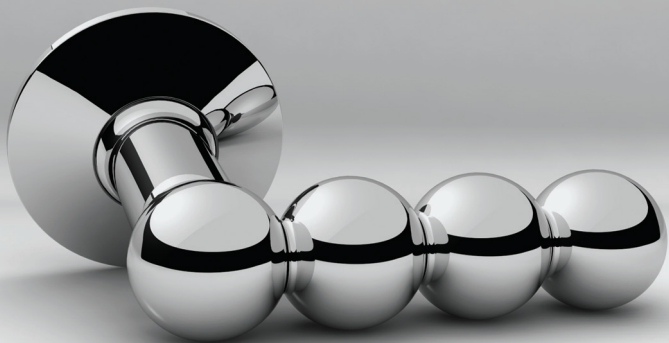


Length: 4.7"

Projection: 2.4"

Shown with Rosette RS 1001

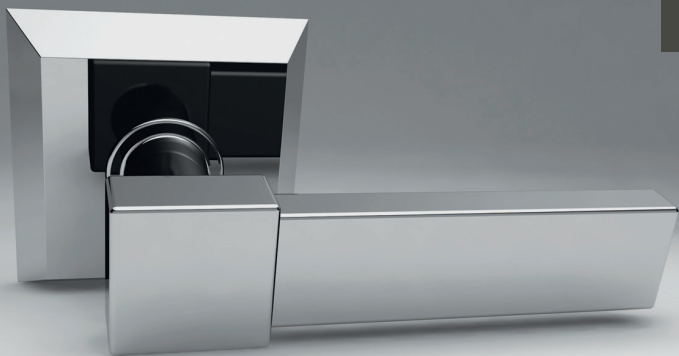
# LV 2064



Length: 4.5"

Projection: 3"

Shown with Rosette RS 1010

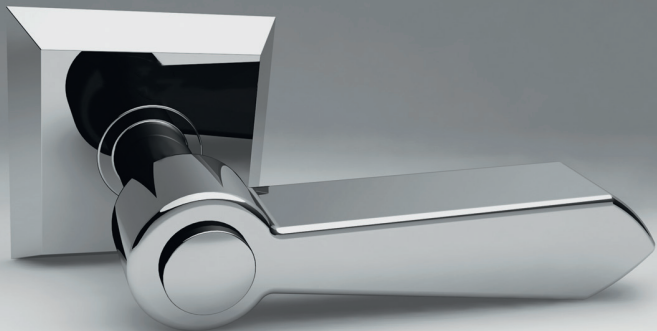


Length: 4.75"

Projection: 2.5"

Shown with Rosette RS 2108

# LV 2115

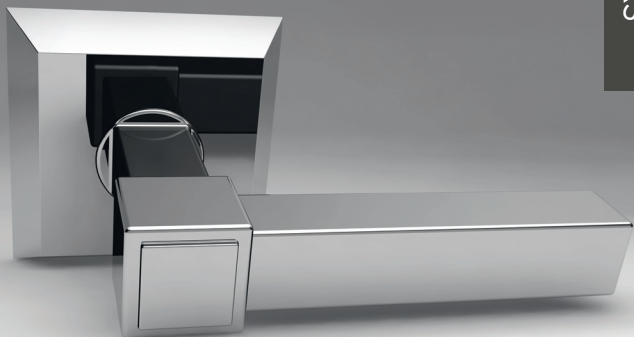


Length: 5.1"

Projection: 3"

Shown with Rosette RS 2108





Length: 4.5"

Projection: 2.87"

Shown with Rosette RS 2108

# LV 3002



Length: 4.6"

Projection: 3.4"

Shown with Rosette RS 2002

LV 3006

LEVERS



Length: 4.4"

Projection: 2.8"

Shown with Rosette RS 1001

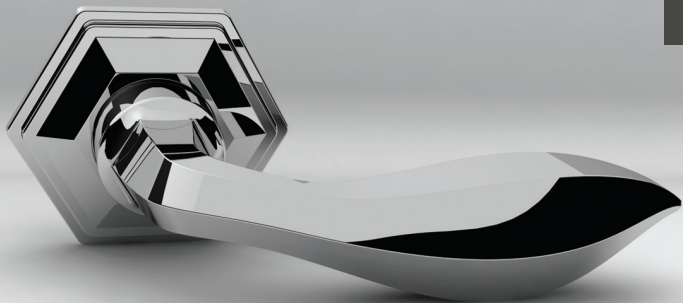
# LV 3011



Length: 4.5"

Projection: 2.8"

Shown with Rosette RS 1027

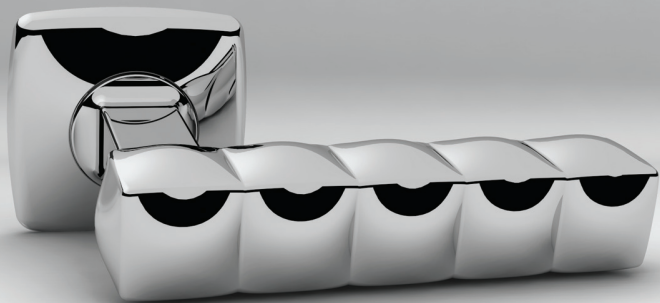


Length: 4.4"

Projection: 2.8"

Shown with Rosette RS 3012

# LV 3017



Length: 4.3"

Projection: 2.7"

Shown with Rosette RS 2017



Length: 5"

Projection: 2.4"

Shown with Rosette RS 1001

# LV 3023

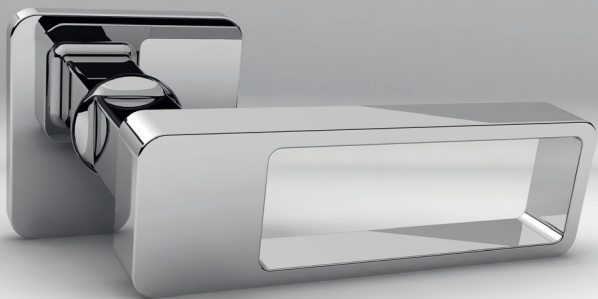


Length: 4.4"

Projection: 2.7"

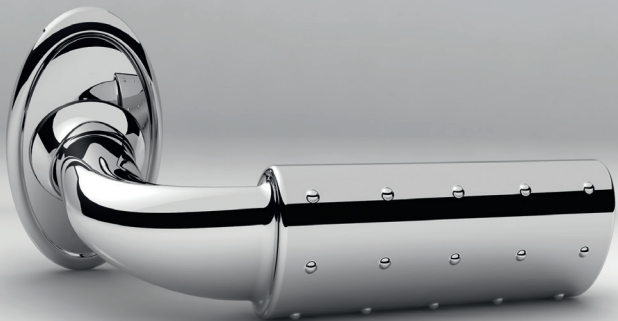
Shown with Rosette RS 1001





Available lengths : 4.4", 6"  
Projection: 2.5"  
Shown with Rosette RS 2028

# LV 3030



Length: 4.7"

Projection: 2.6"

Shown with Rosette RS 3006

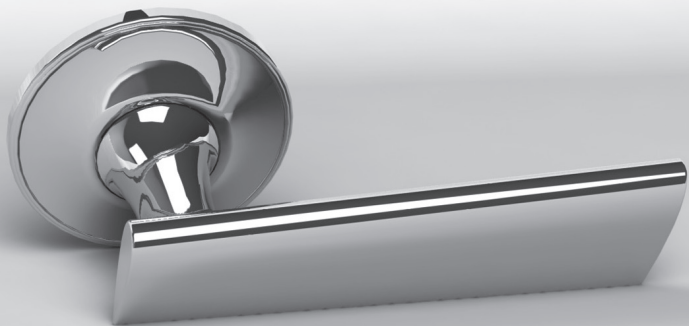


Length: 4.7"

Projection: 2.7"

Shown with Rosette RS 1001

# LV 3037



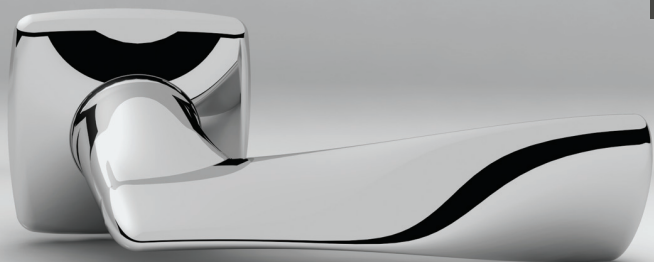
Length: 4.56"

Projection: 2.12"

Shown with Rosette RS 1001

LV 3045

LEVERS

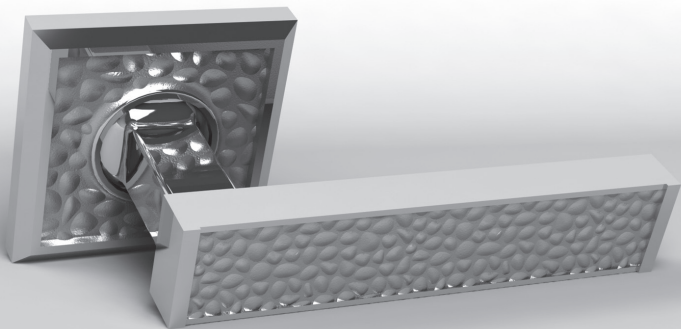


Length: 4.5"

Projection: 2.3"

Shown with Rosette RS 2017

# LV 4007



Length: 5"

Projection: 2.5"

Shown with Rosette RS 5007



Length: 4.5"

Projection: 2.5"

Shown with Rosette RS 1001

# LV 4021

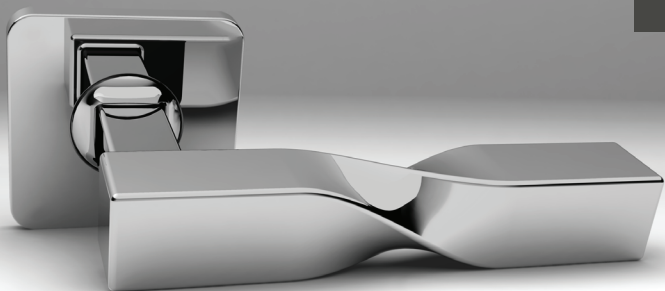


Length: 4.18"

Projection: 2.93"

Shown with Rosette RS 4021





Length: 5"

Projection: 2.6"

Shown with Rosette RS 2028

# LV 4055



Length: 4.56"

Projection: 3"

Shown with Rosette RS 2002

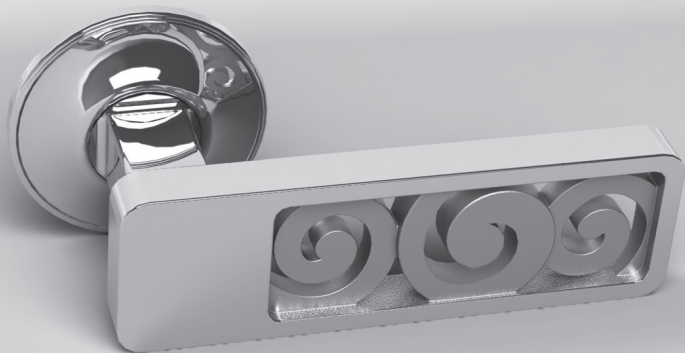


Length: 4.25"

Projection: 2.68"

Shown with Rosette RS 2002

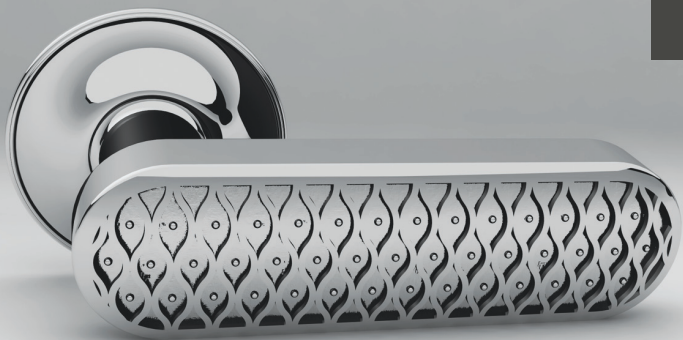
# LV 5005



Length: 5.1"

Projection: 2.5"

Shown with Rosette RS 1001



Length: 4.75"

Projection: 2.6"

Shown with Rosette RS 1001

LV 5030



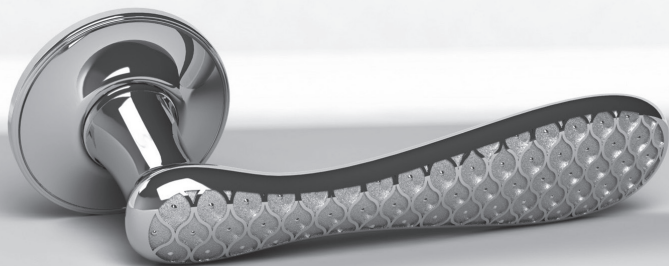
Length: 5.2"

Projection: 2.4"

Shown with Rosette RS 5030

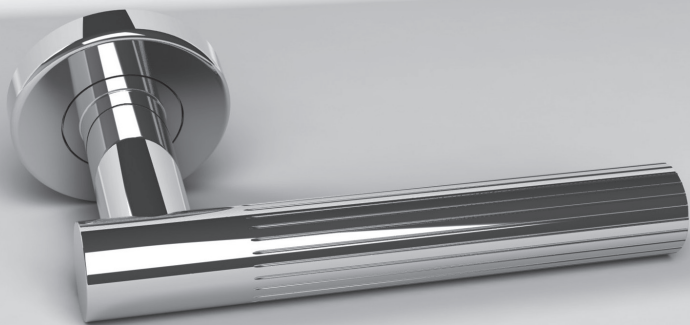
LV 5125

LEVERS



Available lengths: 4.5", 6.4"  
Projection: 2.6"  
Shown with Rosette RS 1001

# LV 5820



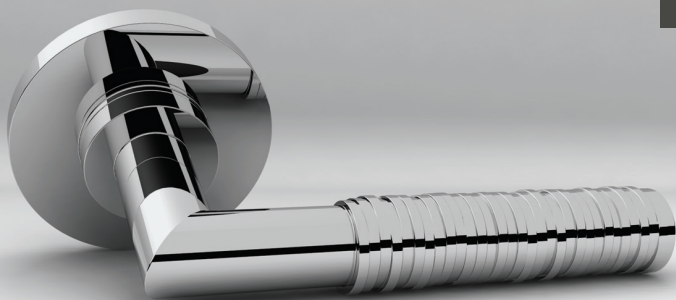
Artisan Series - Robert A. M. Stern

Length: 5.18"

Projection: 2.55"

Shown with Rosette RS 5820





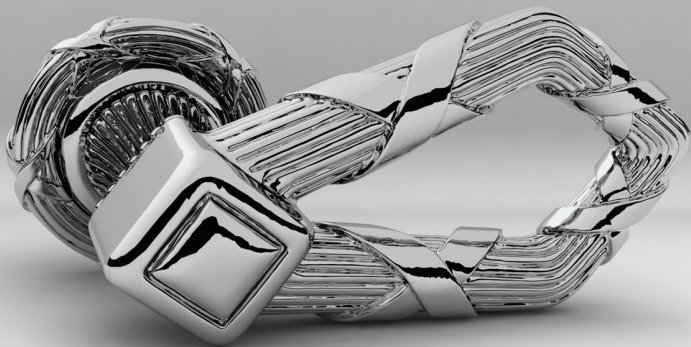
Artisan Series - Harry Allen

Length: 5"

Projection: 2.5"

Shown with Rosette RS 5900

LV 5901



Artisan Series - Paul Bundarin

Length: 5"

Projection: 3"

Shown with Rosette RS 5901



Artisan Series - Judith Frey

Length: 4.9"

Projection: 2.5"

Shown with Rosette RS 5902

# LV 5903



Artisan Series - Thomas Kurilla

Length: 5.1"

Projection: 2.5"

Shown with Rosette RS 5903

LV 5904

LEVERS



Artisan Series - Paul Robilotti

Length: 4.6"

Projection: 3.1"

Shown with Rosette RS 5904

# LV 5908



Artisan Series - Anthony P. Browne

Available lengths: 4.5", 5"

Projection: 2.87"

Shown with Rosette RS 5908

# ROSETTES

# RS 1001



Available sizes: 2", 2.25", 2.5", 2.75"





Available sizes: 2", 2.25", 2.5", 2.75"

RS 1027

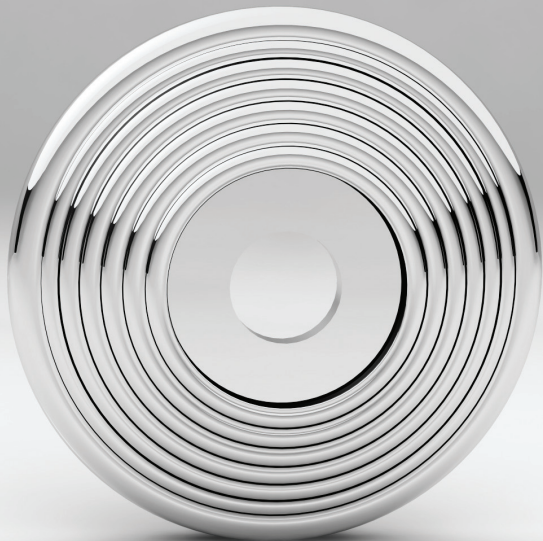


Available sizes: 2.25", 2.5", 2.75"



Available sizes: 2.25", 2.5", 2.75"

RS 2009



Available sizes: 2.25", 2.5", 2.75"

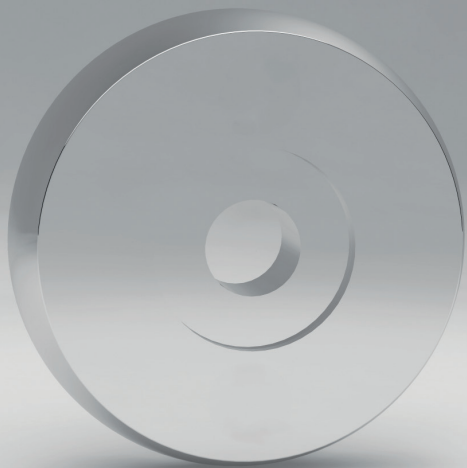


Available sizes: 2", 2.25", 2.5", 2.75"

# RS 2028

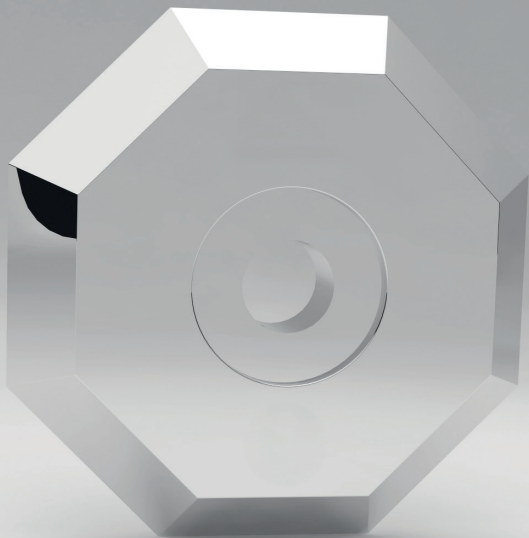


Available sizes: 2", 2.25", 2.5", 2.75"



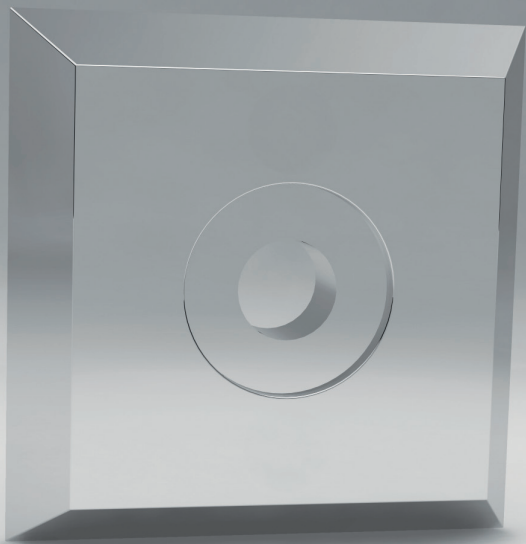
Available sizes: 2.25", 2.5", 2.75"

RS 2103



Available sizes: 2.25", 2.5", 2.75"





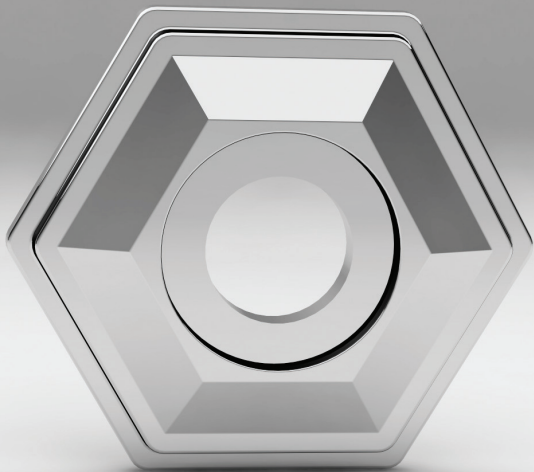
ROSETTES

Available sizes: 2.25", 2.5", 2.75"

RS 3006



Available sizes: 2.5", 2.75"



Available sizes: 2.25", 2.5", 2.75"

# RS 3101



Available sizes: 2.25", 2.5", 2.75"



Available sizes: 2.25", 2.5", 2.75"

# RS 3103



Available sizes: 2.25", 2.5", 2.75"



Available sizes: 2.25", 2.5", 2.75"

# RS 3105



Available sizes: 2.25", 2.5", 2.75"





Available sizes: 2.25", 2.5", 2.75"

# RS 3107

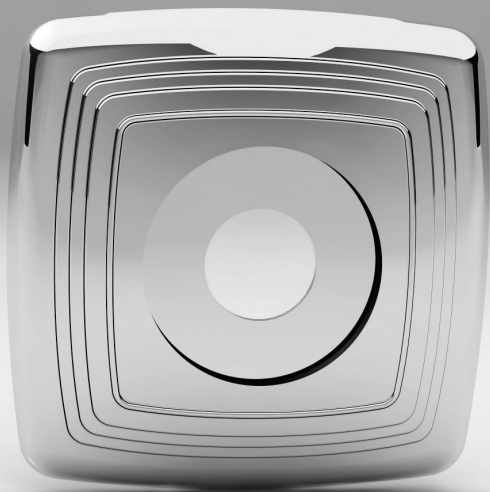


Available sizes: 2.25", 2.5", 2.75"



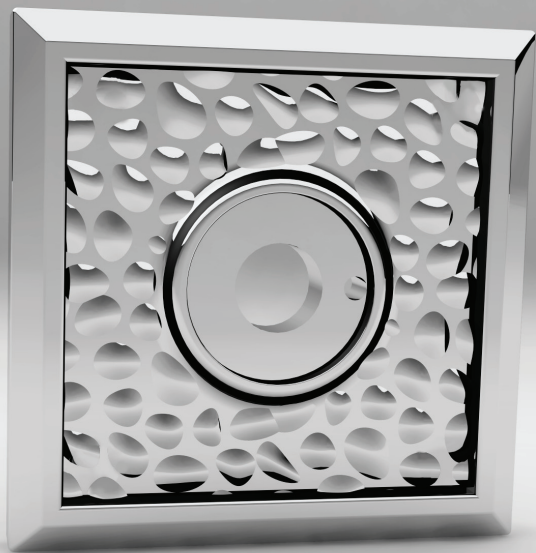
Width: 2.4"  
Height: 3"

RS 5004



Available sizes: 2.25", 2.5", 2.75"

RS 5007



ROSETTES

Available sizes: 2.5", 2.75"

RS 5908



Available sizes: 2.25", 2.5", 2.75"

# HINGES

Our Extruded Butt Hinges (BHE) meet or exceed ANSI standards. Cast Butt Hinges (BHC) are thick-leaf with butterfly hole patterns. SA Baxter offers some of the most detailed and unique hinges in the industry. Custom sizes are available.

# BHE 2000A



Available sizes: 4" x 4", 4.5" x 4.5", 5" x 5"  
Shown with Hinge Finials BF 1001



# BHE 2000B



HINGES

Available sizes: 4" x 4", 4.5" x 4.5", 5" x 5", 6" x 6"  
Shown with Hinge Finials BF 1001

# BHE 2000C



Available sizes:

2.5" x 2.5", 3" x 3", 3.5" x 3.5", 4" x 4", 4.5" x 4.5", 5" x 5", 6" x 6"

Shown with Hinge Finials BF 1001

# BHE 2000D



HINGES

Available sizes:

2.5" x 2.5", 3" x 3", 3.5" x 3.5", 4" x 4", 4.5" x 4.5", 5" x 5", 6" x 6"

Shown with Hinge Finials BF 1001

# BHE 2000E



Available sizes:

2.5" x 2.5", 3" x 3", 3.5" x 3.5", 4" x 4", 4.5" x 4.5", 5" x 5", 6" x 6"

Shown with Hinge Finials BF 1001

# BHE 2000F



HINGES

Available sizes:

2.5" x 2.5", 3" x 3", 3.5" x 3.5", 4" x 4", 4.5" x 4.5", 5" x 5", 6" x 6"

Shown with Hinge Finials BF 1001

# BHE 2000G



Available sizes:

2.5" x 2.5", 3" x 3", 3.5" x 3.5", 4" x 4", 4.5" x 4.5", 5" x 5", 6" x 6"

Shown with Hinge Finials BF 1001

# BHC 1000A



HINGES

Available sizes:

2.5" x 2.5", 3" x 3", 3.5" x 3.5", 4" x 4", 4.5" x 4.5", 5" x 5", 6" x 6"

Shown with Hinge Finials BF 1001

# BHC 1000B



Available sizes:

2.5" x 2.5", 3" x 3", 3.5" x 3.5", 4" x 4", 4.5" x 4.5", 5" x 5", 6" x 6"

Shown with Hinge Finials BF 1001



# BHC 1000C



HINGES

Available sizes:

2.5" x 2.5", 3" x 3", 3.5" x 3.5", 4" x 4", 4.5" x 4.5", 5" x 5", 6" x 6"

Shown with Hinge Finials BF 1001

# BHC 1000D



Available sizes:

2.5" x 2.5", 3" x 3", 3.5" x 3.5", 4" x 4", 4.5" x 4.5", 5" x 5", 6" x 6"

Shown with Hinge Finials BF 1001



Available sizes:

2.5" x 2.5", 3" x 3", 3.5" x 3.5", 4" x 4", 4.5" x 4.5", 5" x 5", 6" x 6"

Shown with Hinge Finials BF 1001

# BHC 1000F



Available sizes:

2.5" x 2.5", 3" x 3", 3.5" x 3.5", 4" x 4", 4.5" x 4.5", 5" x 5", 6" x 6"

Shown with Hinge Finials BF 1001

# BHC 1000G



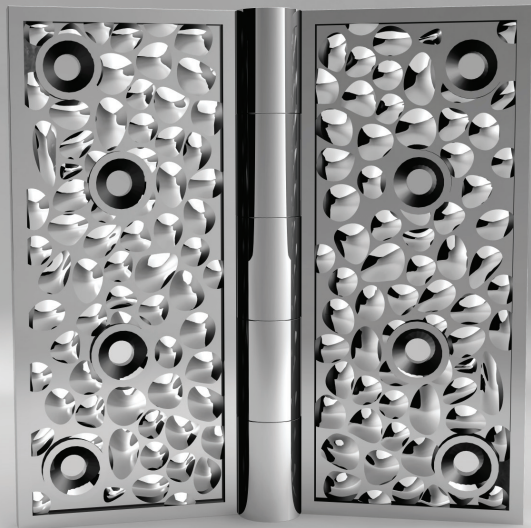
HINGES

Available sizes:

2.5" x 2.5", 3" x 3", 3.5" x 3.5", 4" x 4", 4.5" x 4.5", 5" x 5", 6" x 6"

Shown with Hinge Finials BF 1001

# BHC 3007A



Available sizes: 4" x 4", 4.5" x 4.5"



HINGES

Available sizes: 4" x 4", 4.5" x 4.5"

# BHC 3019A



Available sizes: 4" x 4", 4.5" x 4.5"  
Shown with hand hammering



# BHC 4001A



HINGES

Available sizes: 4" x 4", 4.5" x 4.5"

# BHC 4005A



Available sizes: 4" x 4", 4.5" x 4.5"



Available sizes: 4" x 4", 4.5" x 4.5"

# BHC 4017A



Available sizes: 4" x 4", 4.5" x 4.5"

# BHC 4026A



HINGES

Available sizes: 4" x 4", 4.5" x 4.5"

# BHC 4028A



Available sizes: 4" x 4", 4.5" x 4.5"

BHC 4043A



HINGES

Available sizes: 4" x 4", 4.5" x 4.5"

# BHC 5030



Available sizes: 5" x 5", 6" x 6"



# BHC 5900A



HINGES

Artisan Series -Harry Allen

Available sizes: 4.5" x 4.5"

# BHC 5901



Artisan Series -Paul Bundarin

Available sizes: 4.5" x 4.5"



Artisan Series -Judith Frey

Available sizes: 4.5" x 4.5"

# BHC 5903



Artisan Series -Thomas Kurilla

Available sizes: 4.5" x 4.5"

BHC 5904



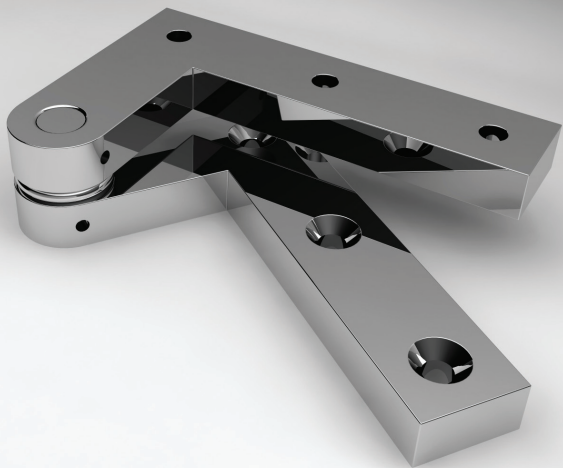
HINGES

Available sizes: 4.5" x 4.5"

OH 3001



Available sizes: 4" x 6"



Offset Pivot Hinges are available in a variety of configurations to suit your field conditions.





# HINGE FINIALS

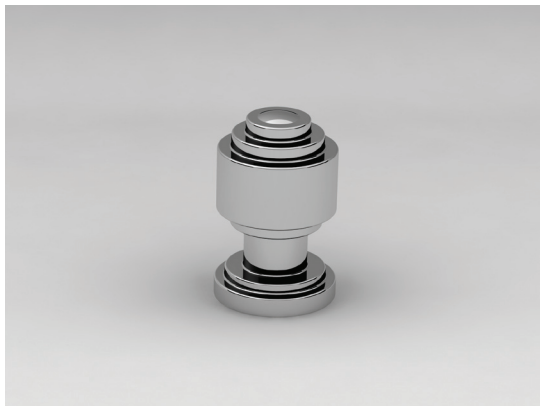
BF 1000



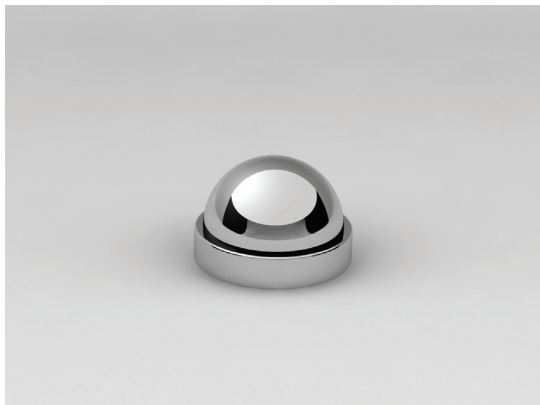
BF 1001



BF 1002



BF 1003



BF 1006



BF 1007



BF 1009



BF 1010



BF 1012



BF 1014



BF 1015



BF 1017



BF 1018



BF 1019





BF 1025



BF 1026



BF 1029



BF 1043



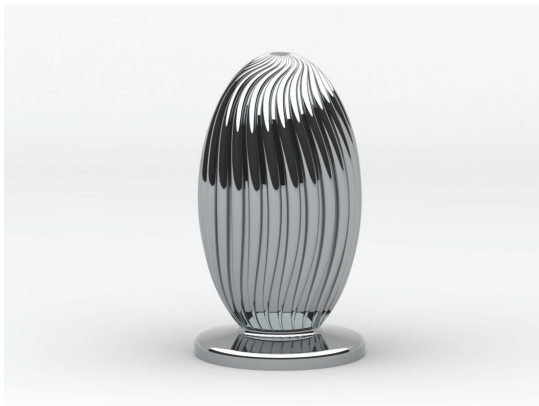
BF 1062



BF 1064



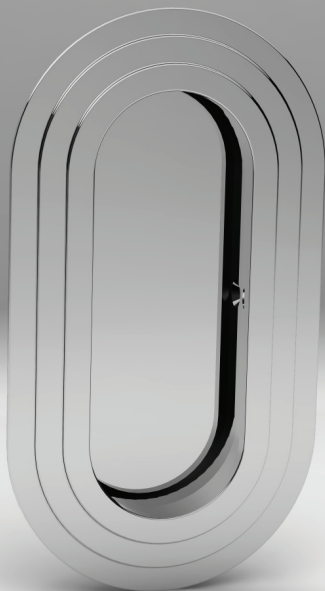
BF 5908



# POCKET DOOR PULLS

Most Pocket Door Pulls are available in passage and privacy configurations.

PP 1002



Width: 2.5"  
Height: 4.6"



Width: 2.25"

Height: 7"

PP 1070



Width: 2"

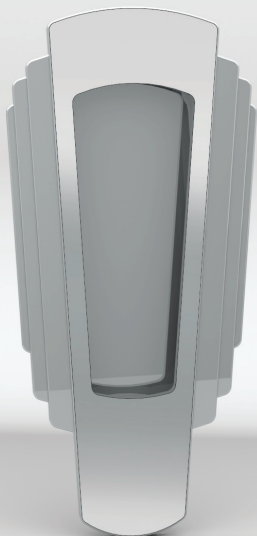
Height: 6.5"





Width: 2.5"  
Height: 6.25"

PP 4055



Width: 2.75"  
Height: 5.75"



Width: 2.31"  
Height: 6.31"

PP 5007



Width: 2"  
Height: 4.75"



Width: 2"  
Height: 4.75"

FCP



Available sizes: 2.5" and 3"

# THUMB TURNS

TT 1025



TT 1037





TT 1062



TT 1064



THUMB TURNS

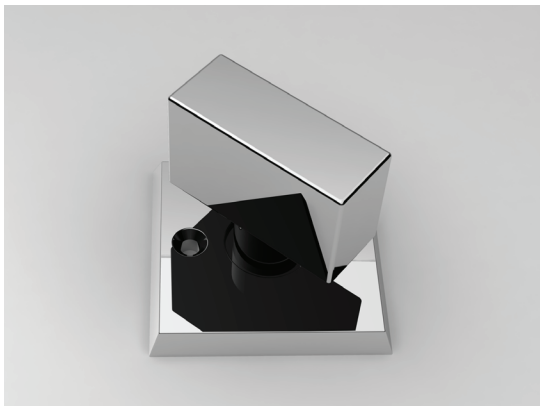
TT 2009



TT 2029



TT 2072

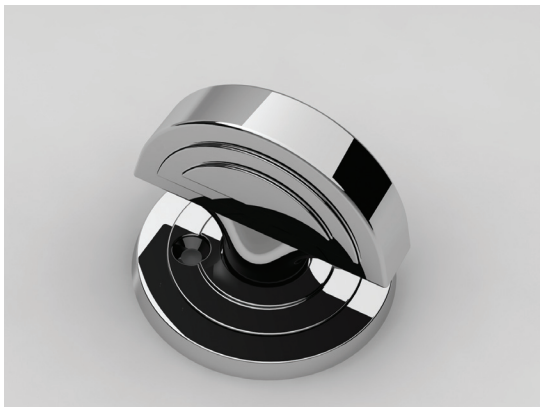


TT 3001



THUMB TURNS

TT 3002



TT 3006



TT 3010



TT 3011



THUMB TURNS

TT 3012



TT 3014



TT 3017



TT 3020



THUMB TURNS

TT 3027



TT 4051





TT 4025

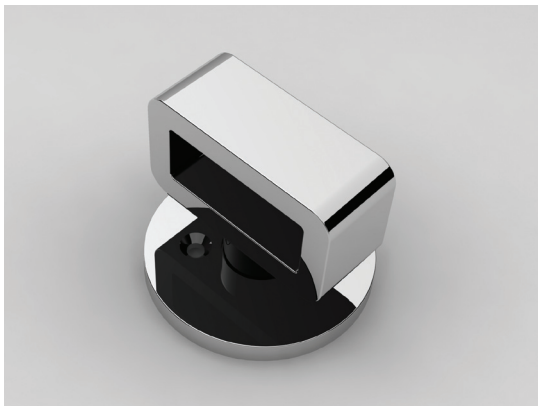


TT 4026



THUMB TURNS

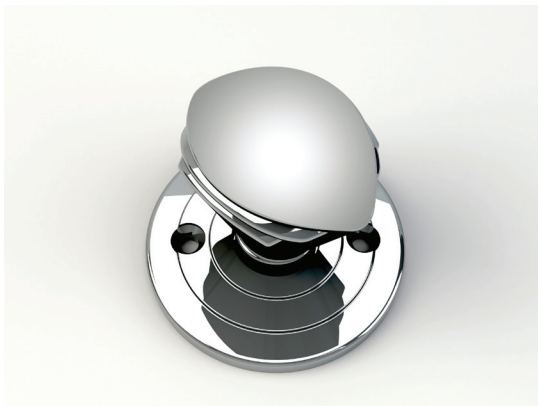
TT 4028



TT 4055



TT 4065

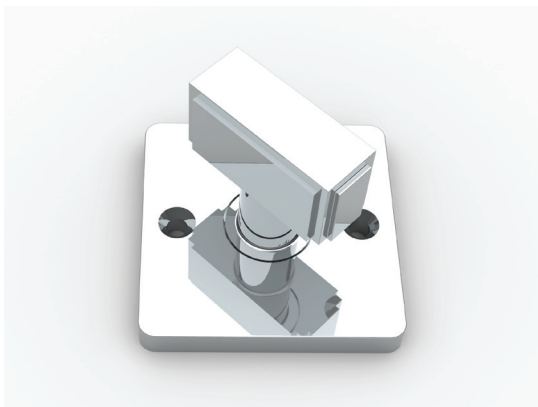


TT 5005



THUMB TURNS

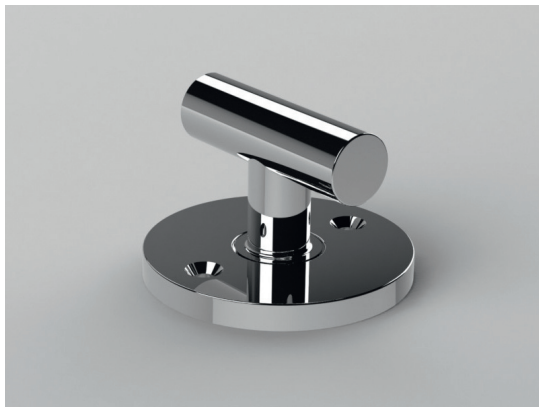
TT 5810



TT 5811



TT 5820



TT 5900 S



THUMB TURNS

TT 5902



TT 5908



# KEYHOLE ESCUTCHEONS

Most Keyhole Escutcheons may be ordered to accommodate Euro-Profile Cylinders and/or function as an Emergency Release Grommet.

KE 1027



KE 1028





KE 2006



KE 2011



KE 2014



KE 2017



KE 2020



KE 3012



KE 4002



KE 4009



KE 5007



KE 5820





# ESCUTCHEON PLATES

Most Escutcheon Plates are available for interior and exterior applications in 2" x 8" and 3" x 10" sizes. Most Escutcheon Plates may be ordered to accommodate North American Round Cylinders or Euro-Profile Cylinders and are available in custom configurations and sizes.

EP 1000







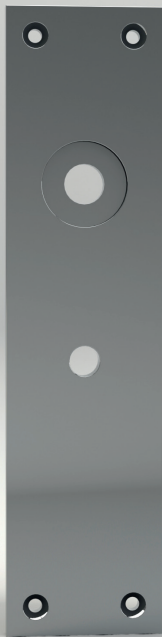
ESCUTCHEON PLATES





ESCUTCHEON PLATES

EP 1064









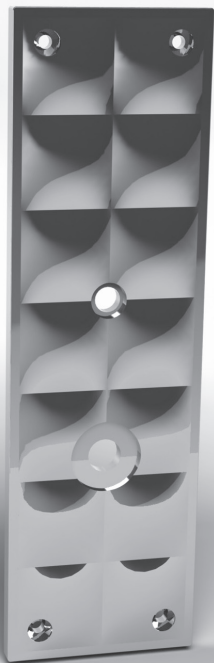
ESCUTCHEON PLATES







EP 4017D



EP 4055



ESCUTCHEON PLATES

EP 4065



EP 5007

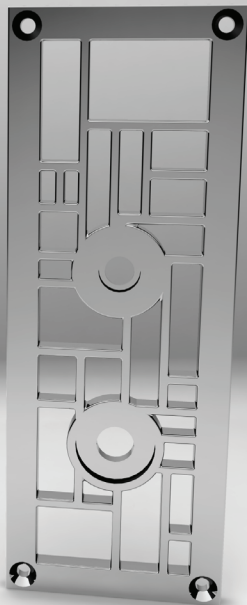


ESCUTCHEON PLATES

EP 5018









EP 5030





# CYLINDER COVERS

Most Cylinder Covers may be ordered to accommodate North American Round Profile Cylinders or Euro-Profile Cylinders.

CC 1010



CC 1019



CC 1027



CYLINDER COVERS

CC 2002



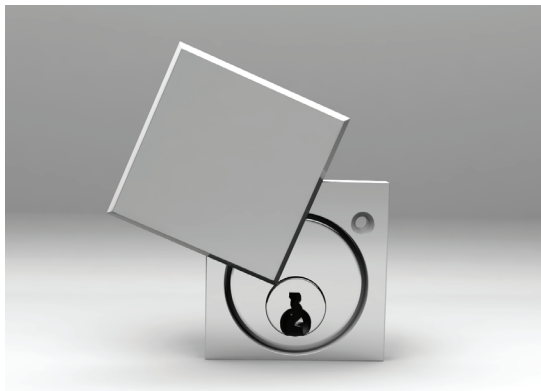
CC 2009



CC 2062



CC 2072



CYLINDER COVERS

CC 3017

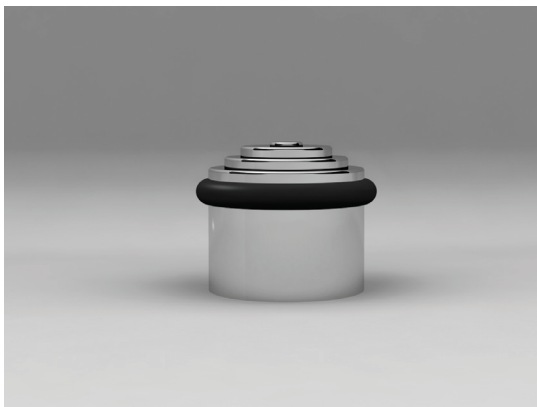




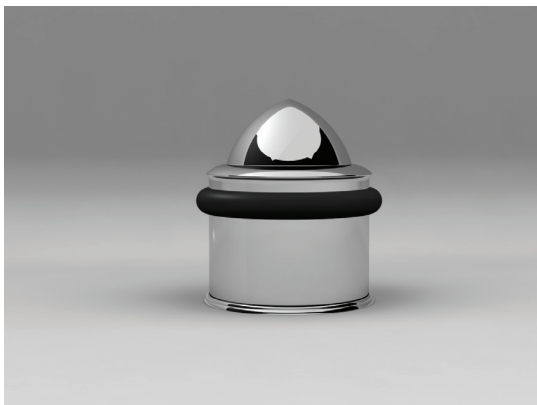


# DOOR STOPS

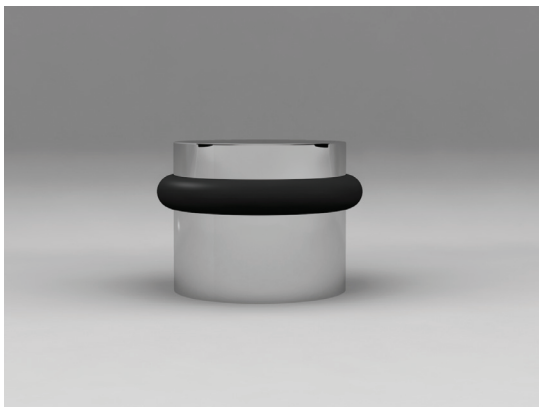
DS 1002



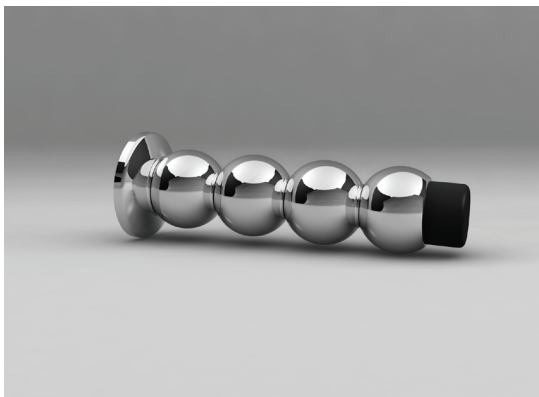
DS 1018



DS 1027



DS 1064



DS 3001



DS 3010



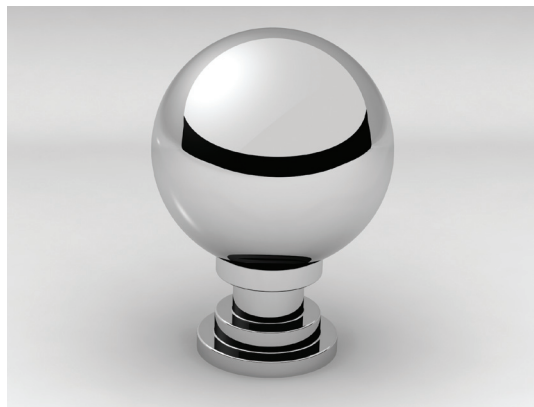
# CABINET KNOBS

Cabinet Knobs are offered in 1", 1.25" and 1.5" sizes.  
Custom sizes are available.

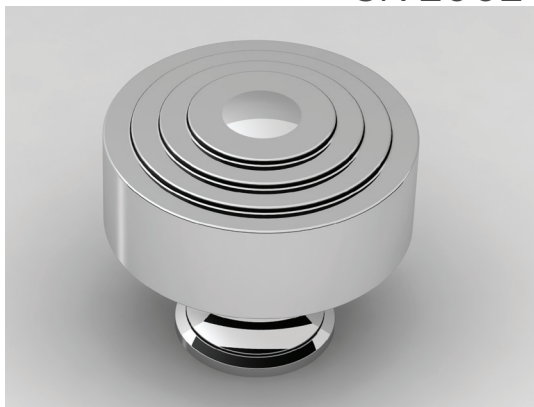
CK 1000



CK 1064



CK 2002



CK 2006



CK 2009

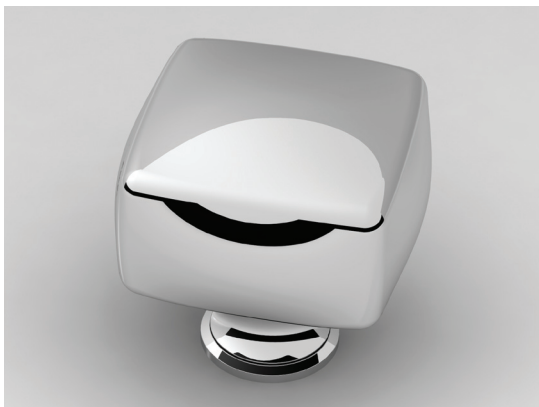


CK 2012



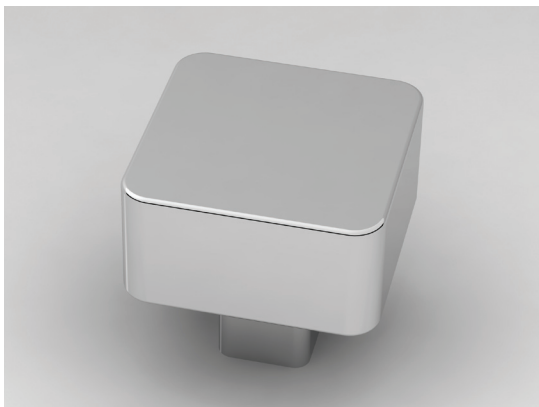


CK 2017



CABINET KNOBS

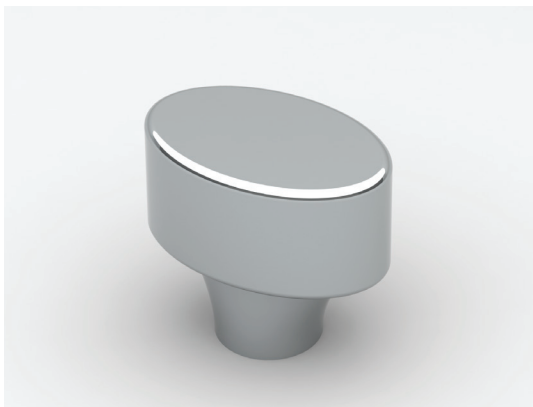
CK 2028



CK 2062



CK 2101



CK 3001



CK 3007



CK 3010



CK 3013



CK 3014

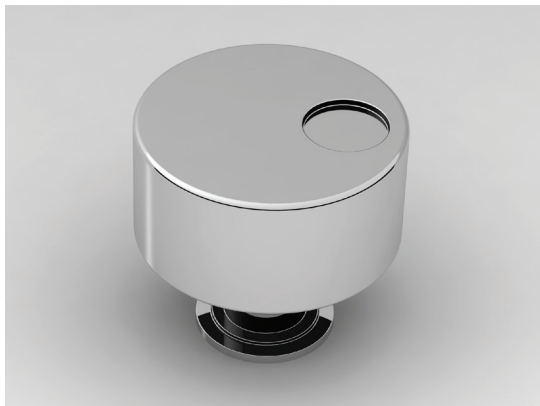


CABINET KNOBS

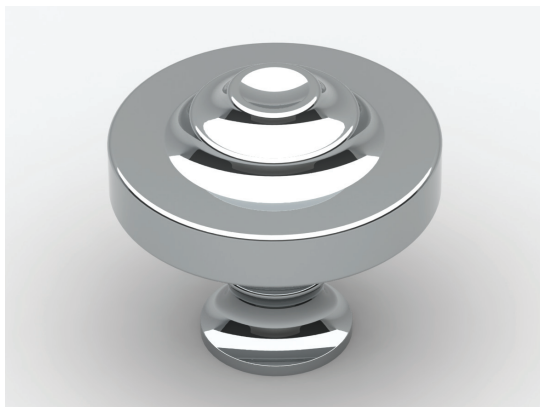
CK 3018



CK 3027



CK 3106

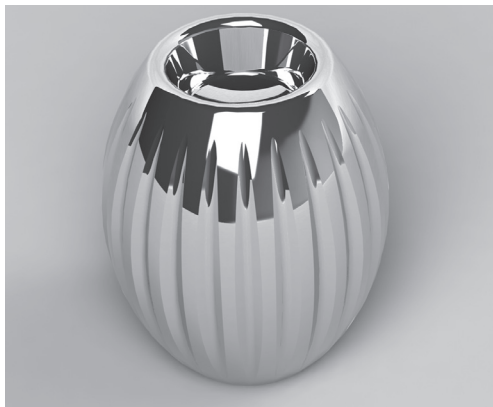


CK 4004



CABINET KNOBS

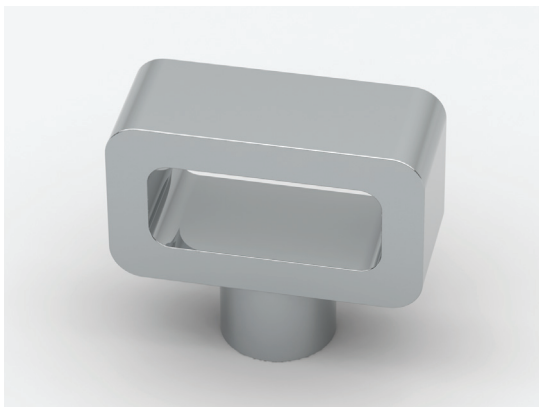
CK 4011



CK 4025



CK 4028T



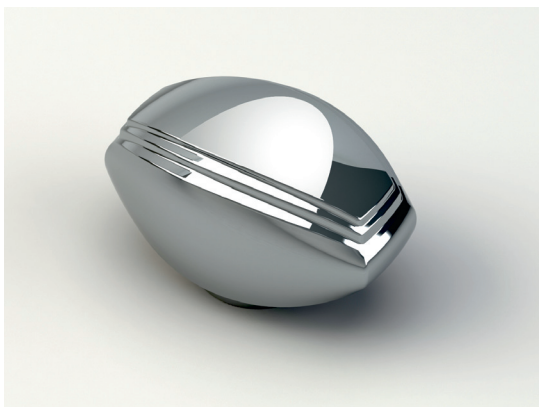


CK 4043



CABINET KNOBS

CK 4055



CK 4065



CK 5005



CK 5026

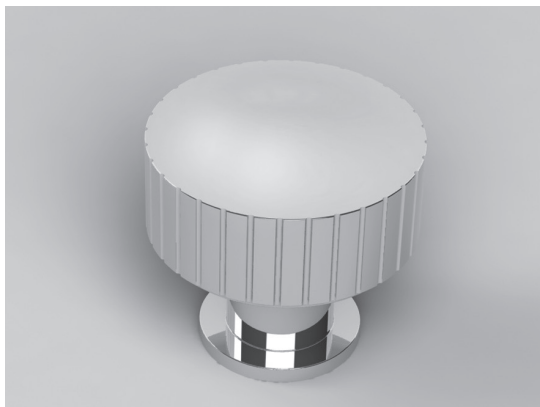


CABINET KNOBS

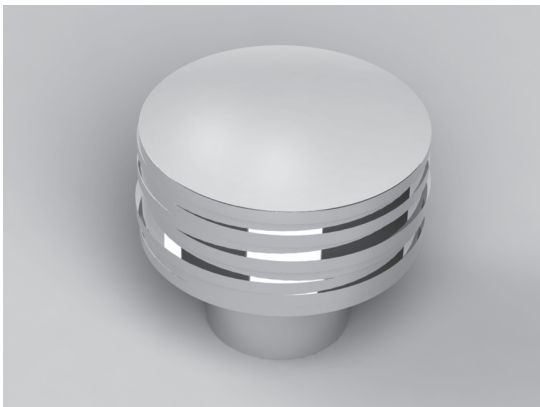
CK 5030



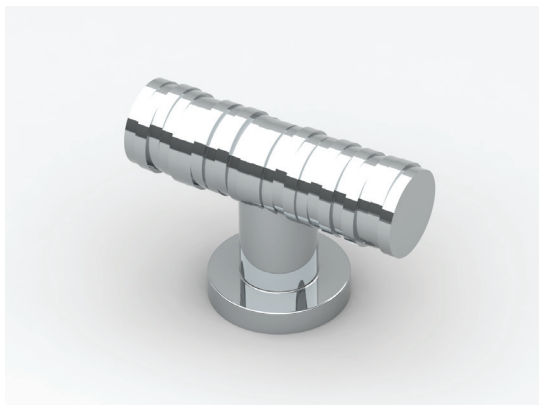
CK 5820



CK 5900



CK 5900T



CABINET KNOBS

CK 5908



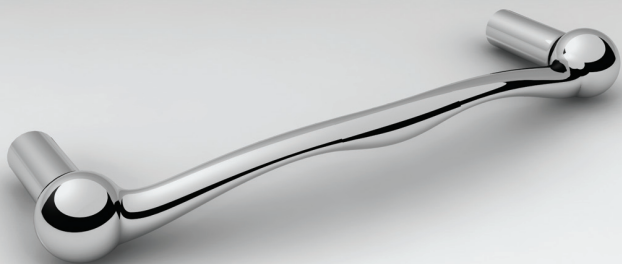


# CABINET PULLS

Cabinet Pulls are offered in 4" and 6" center to center sizes.  
Custom sizes are available.



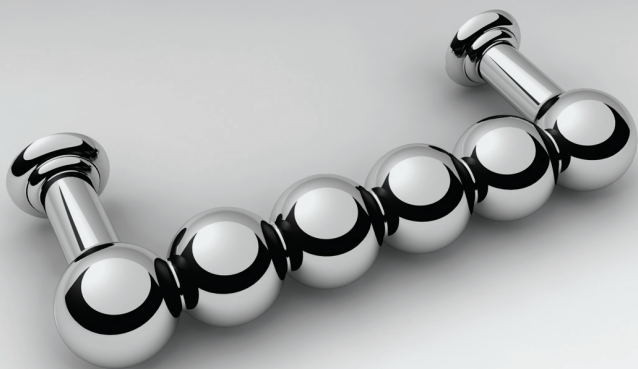




CABINET PULLS

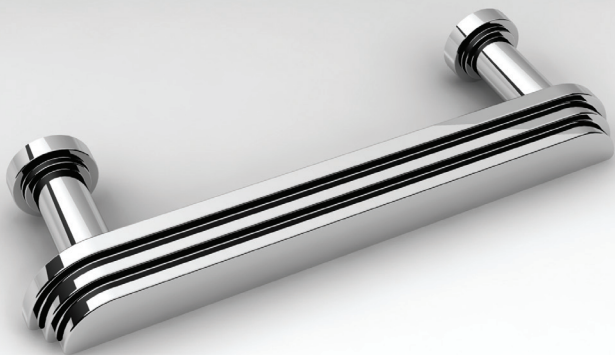
CP 2027



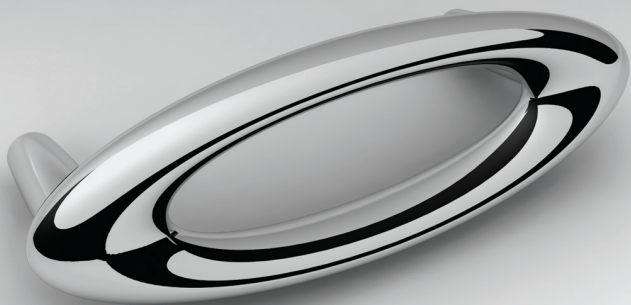


CABINET PULLS

CP 3004



CP 3006

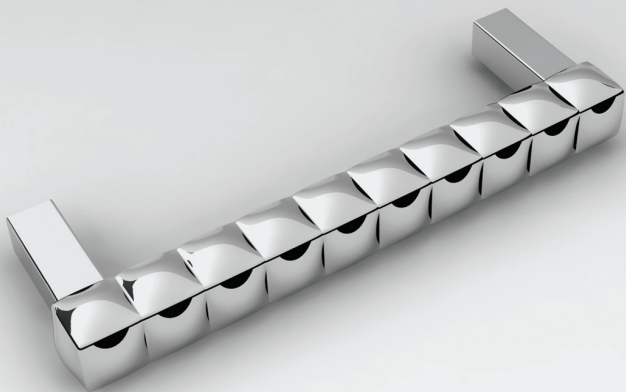


CABINET PULLS

CP 3011

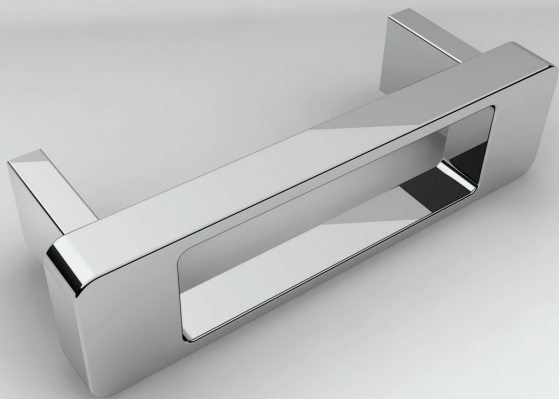


CP 3017



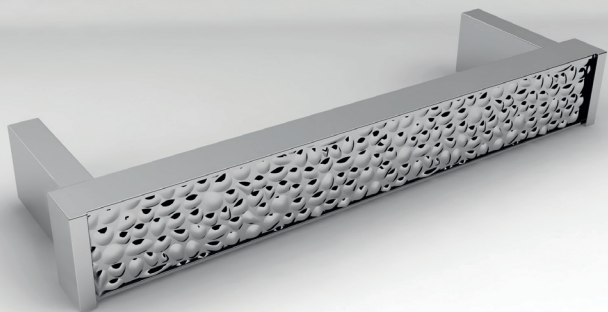
CABINET PULLS

CP 3028



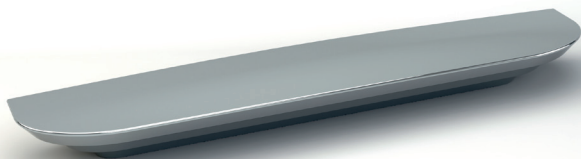


CP 4007

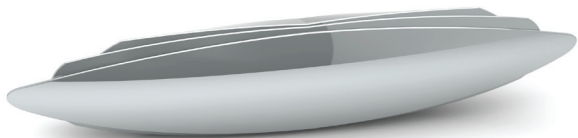


CABINET PULLS

CP 4055

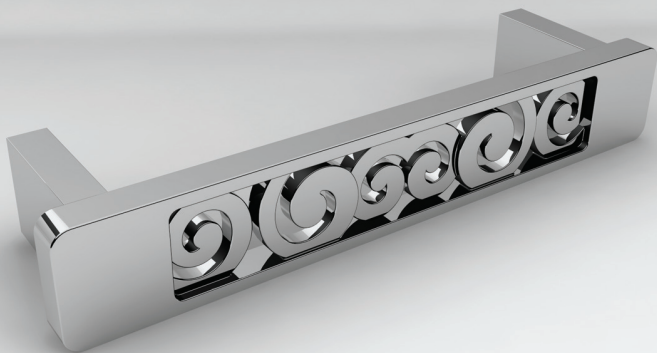


CP 4065



CABINET PULLS

CP 5005

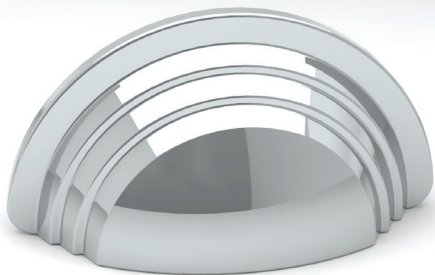


CP 5908



CABINET PULLS

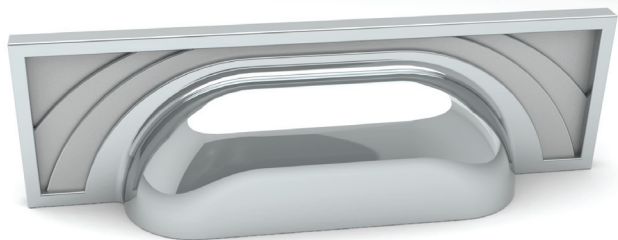
# BP 4055



Bin Pull length: 3.687"

Bin Pull projection: 1"

BP 4065



CABINET PULLS

Bin Pull length: 5"  
Bin Pull projection: .875"





# DOOR PULLS

Door Pulls are offered in 8" and 12" center to center sizes.  
Custom sizes are available.

DP 2010





DOOR PULLS

DP 2027



DP 2064



DOOR PULLS

DP 3004



DP 3006



DOOR PULLS

DP 3017





DP 3028



DOOR PULLS

DP 4007



DP 4055



DOOR PULLS

DP 4065



DP 5005



DOOR PULLS

DP 5908



Artisan Series - Anthony P. Browne

# SUITES



## 2009 RINGED SUITE





SUITES

## 2012 TRADITIONAL RING & GEM SUITE



## 2064 MODERN BALL SUITE



SUITES

## 3001 SNOWFLAKE SUITE



## 3002 STEPPED SUITE



SUITES

## 3006 MODERN ELLIPTICAL SUITE



## 3007 RUSTIC BUMP SUITE



SUITES

## 3010 MODERN BARREL SUITE



## 3013 ENDLESS CIRCLES SUITE





## 3014 CLASSIC FLOWER SUITE



## 3017 SQUARE PILLOW SUITE



## 3018 VINE SUITE



## 3027 MODERN CYLINDRICAL SUITE



SUITES

## 3028 MODERN RECTILINEAR SUITE



## 4004 ART DECO SUITE



SUITES

## 4025 QUILTED SUITE



## 4043 COLIN F. GENTLE SUITE





## 4055 CASCADE SUITE



## 4065 ECHELON SUITE



## 5005 SPIRAL THEMED SUITE



## 5026 GOTHIC SUITE

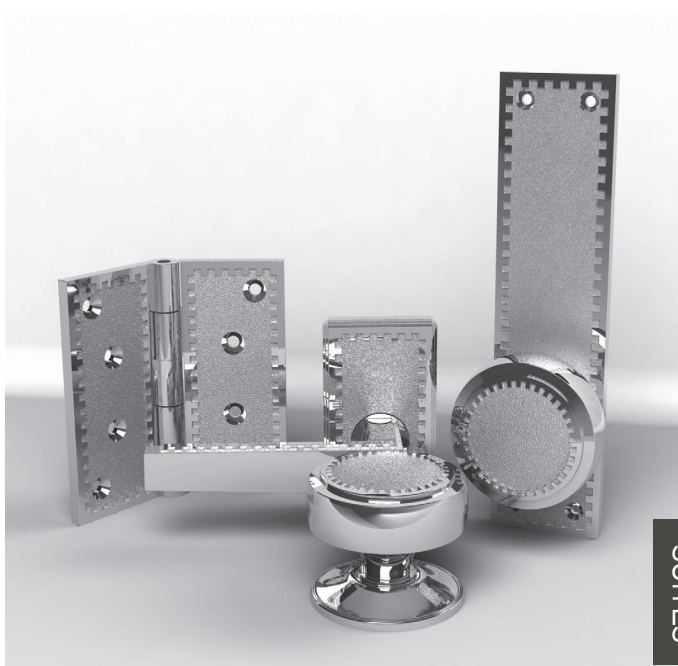


SUITES

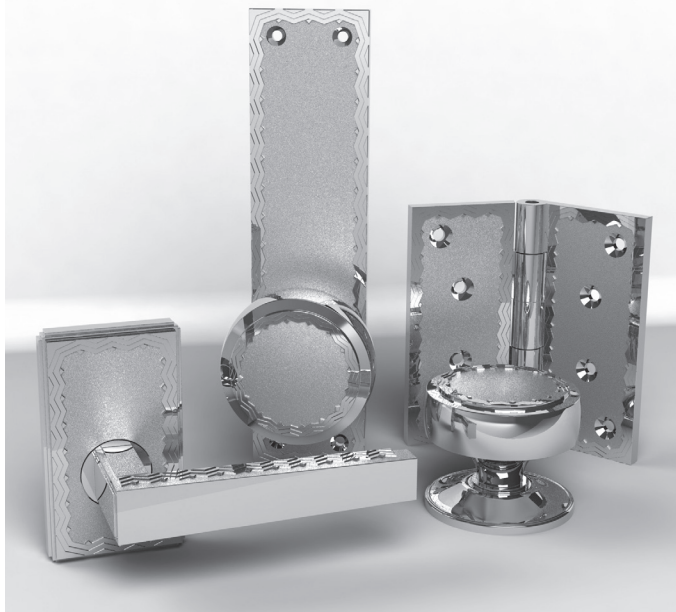
## 5030 VINES AND KELP SUITE



5801 MEANDER SUITE - ROBERT A.M. STERN



## 5805 DENTIL SUITE - ROBERT A.M. STERN



5808 SWAG SUITE - ROBERT A.M. STERN





## 5820 FLUTE SUITE - ROBERT A.M. STERN



## 5900 STACKED COIN SUITE - HARRY ALLEN



SUITES

## 5901 PAUL BUNDARIN SUITE



5902 JUDITH FREY SUITE



SUITES

## 5903 THOMAS KURILLA SUITE



## 5904 PAUL ROBILOTTI SUITE



SUITES

## 5908 NITA SUITE - ANTHONY P. BROWNE





PROJECT-READY



Our Project-Ready Collection is a line of high-end, affordable architectural hardware comprised of eight coordinating suites. Beautiful doorknobs, levers, and accessories are finished to order with an unprecedented 2-4 week lead-time.

Pricing is sensible, due to volume production, without sacrificing our commitment to quality. All pieces are crafted in our eco-friendly foundry in the New York State Hudson Valley.

Project-Ready hardware is available in nine of our most popular finishes: Polished Nickel, Burnished Nickel, Polished Brass, Antique Brass, Dark Brass, Polished Chrome, Polished Bronze, Antique Bronze, and Dark Bronze.



PROJECT-READY

## 9000 CLASSIC BULB SUITE



## 9501 TRADITIONAL SUITE



PROJECT-READY

## 9502 ART DECO SUITE



## 9503 MODERN SUITE



PROJECT-READY

## 9504 CRAFTSMAN SUITE



## 9505 GEORGIAN SUITE





PROJECT-READY

## 9506 TRANSITIONAL SUITE



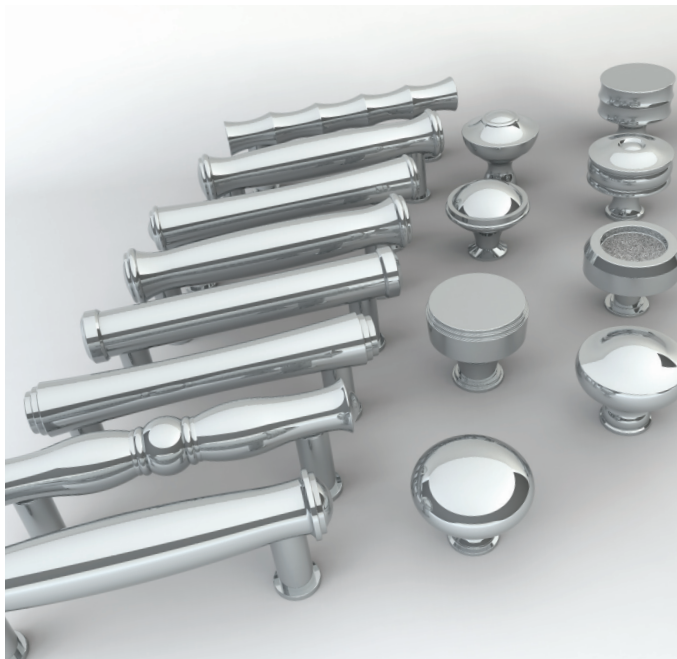
9507 BAMBOO SUITE

## BHE 9000



Available sizes: 4" x 4" and 4.5" x 4.5"

SA Baxter's Project-Ready Template Butt Hinge meets or exceeds ANSI standards.

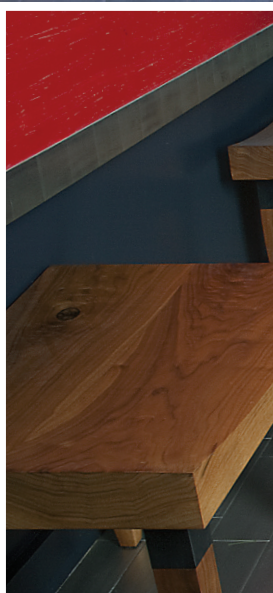


## PROJECT-READY CABINET HARDWARE

Coordinating Cabinet Knobs and Pulls are available in all Project-Ready styles. Cabinet Knobs are 1.25" and Cabinet Pulls are either 3" or 5" center to center.

# FLOORING

SA Baxter offers one-of-a-kind solid metal flooring installed similar to a traditional wood floor. This uniquely engineered product comes in 4" tongue and groove wide planks from 4 inches to 10 feet long and is available in brass, architectural bronze, or white bronze.





FLOORING





# FINISHES



Polished  
Brass



Polished  
Bronze



Polished  
Copper



Polished  
White Bronze



Polished  
Nickel



Burnished  
Brass



Burnished  
Bronze



Burnished  
Copper



Burnished  
White Bronze



Burnished  
Nickel



Light Antique  
Brass



Light Antique  
Bronze



Light Antique  
Copper



Light Antique  
White Bronze



Light Antique  
Nickel



Dark Antique  
Brass



Dark Antique  
Bronze



Dark Antique  
Copper



Dark Antique  
White Bronze



Dark Antique  
Nickel



Old  
Gold



Burnished  
Gold



Burnished  
Chrome



Burnished  
Silver



Light Antique  
Silver



Polished  
Gold



Polished  
Chrome



Polished  
Silver